

URBAN OUTSOURCING

info@urbanoutsourcing.co.za/Craig Noble 0834757116

KDI-1 CAPSULE INSPECTION MACHINE



GENERAL:

This inspection machine is designed and used for inspecting capsule or tablet which is spotty, broken, or not standard by vision through mechanically rotating the capsule over 360 degrees or turning the tablet from one surface to the other surface.

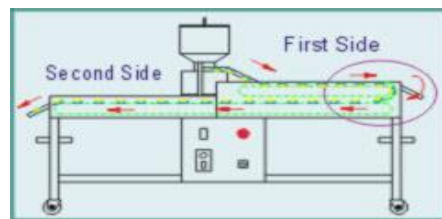
The inspector can easily take out any bad capsule or tablet and collect together.

FEATURES:

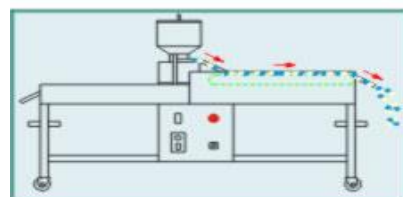
1. All stainless shell, body hopper, and guide meeting G.M.P.requirements.
2. Infinitely variable feeding Speed for different object.
3. Conveying belt is special, durable & easy to clean.
4. No noise, no public hazard.
5. Simple operation, maintenance, and easy clearance.
6. Stable convey result in less labor fatigue.
7. Change guide from capsule to tablet within 10 minutes, vice versa.

APPLICABILITY:

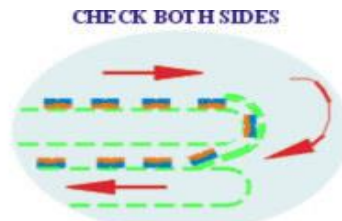
Applicable to all size of capsules, tablets, ball pills and all type of solid medication.



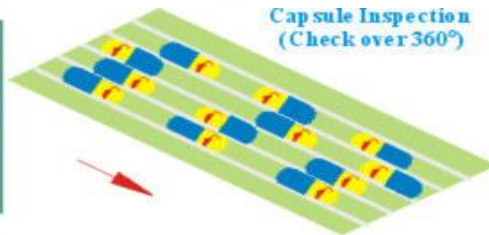
Tablet Inspection (2 operators)



Capsule Inspection (1 operator)



**Capsule Inspection
(Check over 360°)**



URBAN OUTSOURCING

TECHNICAL DATA

CAPACITY CAPSULE	Max. 50,000 Pcs/HR
CAPACITY TABLET	Max. 70,000 Pcs/HR
OPERATOR CAPSULE	1 PERSON
OPERATOR TABLET	2 PERSON
POWER SUPPLY	AC 110/220 50/60Hz
POWER CONSUMPTION	1/4 HP

PACKING DATA

MEASUREMENT	220 x 50 x 140 cm(LxWxH)
PACKING SIZE	230 x 65 x 135 cm(LxWxH)
NET WEIGHT:	150 kgs
GROSS WEIGHT:	220 kgs